

# wsW2LTX 1.1 GUI

Ingo H. de Boer

May 25, 2006

email: <mailto:idb@winshell.org>, url: <http://www.winshell.org/>

Copyright © 2005-2006 Ingo H. de Boer.

Permission to use, copy and distribute this software and its documentation for any purpose is hereby granted without fee, provided that the above copyright notice, author statement and this permission notice appear in all copies of this software and related documentation.

THE SOFTWARE IS PROVIDED "AS-IS" AND WITHOUT WARRANTY OF ANY KIND, EXPRESS, IMPLIED OR OTHERWISE, INCLUDING WITHOUT LIMITATION, ANY WARRANTY OF MERCHANTABILITY OR FITNESS FOR A PARTICULAR PURPOSE.

IN NO EVENT SHALL INGO H. DE BOER OR ANY PERSON OR INSTITUTION RELATED TO INGO H. DE BOER BE LIABLE FOR ANY SPECIAL, INCIDENTAL, INDIRECT OR CONSEQUENTIAL DAMAGES OF ANY KIND, OR ANY DAMAGES WHATSOEVER RESULTING FROM LOSS OF USE, DATA OR PROFITS, WHETHER OR NOT ADVISED OF THE POSSIBILITY OF DAMAGE, AND ON ANY THEORY OF LIABILITY, ARISING OUT OF OR IN CONNECTION WITH THE USE OR PERFORMANCE OF THIS SOFTWARE.

Contents

<b>1</b>	<b>Introduction</b>	<b>1</b>
<b>2</b>	<b>wsW2LTXGUI</b>	<b>1</b>
2.1	Main window . . . . .	1
2.2	Advanced dialog . . . . .	1



## 1 Introduction

The wsW2LTX library is an application programming interface (API) designed to translate a MS Word document to  $\text{\LaTeX}$ .

The library is based on libwv and on several other – mostly Unix based – libraries. These are in detail:

libwv	<a href="http://wwware.sourceforge.net/">http://wwware.sourceforge.net/</a>
libwmf	<a href="http://wwware.sourceforge.net/">http://wwware.sourceforge.net/</a>
freetype	<a href="http://freetype.sourceforge.net/">http://freetype.sourceforge.net/</a>
gdk-pixbuf	<a href="http://developer.gnome.org/arch/imaging/gdkpixbuf.html">http://developer.gnome.org/arch/imaging/gdkpixbuf.html</a>
glib	<a href="http://www.gtk.org/">http://www.gtk.org/</a>
gd	<a href="http://www.boutell.com/gd/">http://www.boutell.com/gd/</a>
iconv	<a href="http://www.gnu.org/software/libiconv/">http://www.gnu.org/software/libiconv/</a>
gettext	<a href="http://www.gnu.org/software/gettext/">http://www.gnu.org/software/gettext/</a>
imagemagick	<a href="http://www.imagemagick.org/">http://www.imagemagick.org/</a>
libpng	<a href="http://www.libpng.org/">http://www.libpng.org/</a>
zlib	<a href="http://www.zlib.net/">http://www.zlib.net/</a>

My thanks go to the developers and supporters of the libraries mentioned above.

## 2 wsW2LTXGUI

### 2.1 Main window

The wsW2LTXGUI program is a graphical user interface to the wsW2LTX library which handles all the methods described in the wsW2LTX API reference.

When wsW2LTXGUI starts, it looks like figure 1. First, the MS Word document has to be selected with the 'Load' button. After that, the buttons 'Convert' and 'Advanced' are enabled.

**Convert** will do the conversion right away. The input file 'test.doc' will be converted to 'test.tex' in the same directory where 'test.doc' resides. The output is shown in the log window.

**Advanced** shows the advanced options dialog described in section 2.2.

The bottom of the dialog shows as an additional information the file version of the wsW2LTX library.

### 2.2 Advanced dialog

**Output name** Normally, the output name is created from the input name by changing the extension from .doc to .tex. This behaviour can be changed by giving the output file a new name.

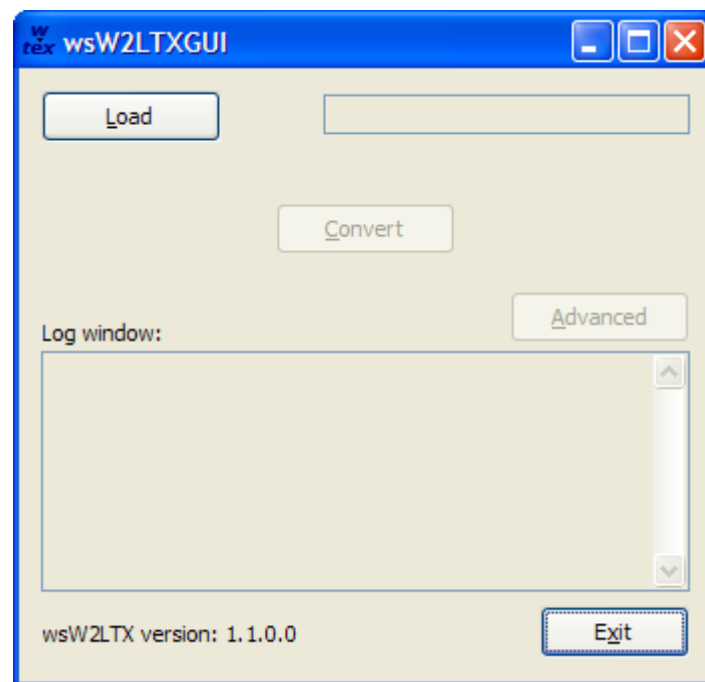


Figure 1: Main window of wsW2LTXGUI.

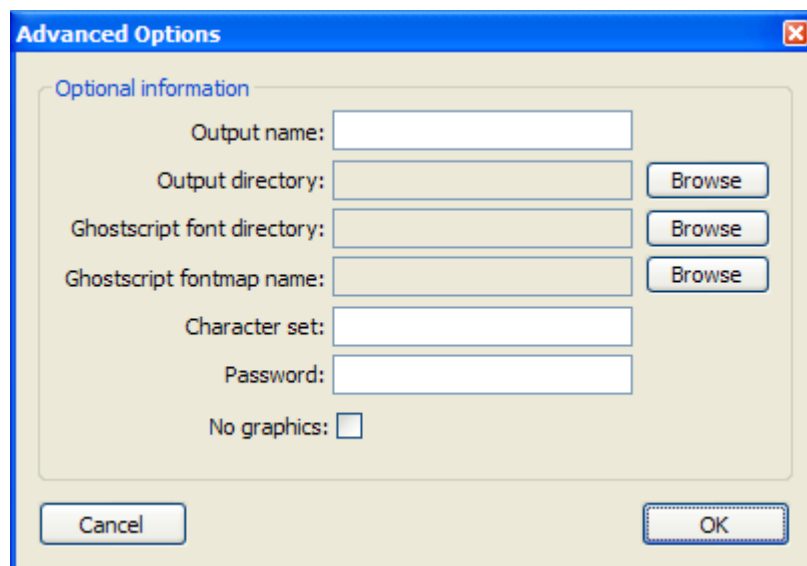


Figure 2: The advanced options dialog of wsW2LTXGUI.

**Output directory** Normally, the output file(s) are written in the same directory where the MS Word document resides. This changes the output directory.

**Ghostscript font directory** The wsW2LTX package comes with the AFPL Ghostscript Fonts which are stored in the directory `gs_fonts`. This directory can be changed here.

**Ghostscript fontmap name** The AFPL Ghostscript Fonts fontmap name is `fonts.dir`. The name of this file can be changed.

**Character set** The library tries to find out the character set of the MS Word document automatically. If this fails, the character set can be set here. The name must correspond to one of the names from the iconv library, e. g. "UTF-8" or "ISO-8859-15". <http://www.gnu.org/software/libiconv/>

**Password** If the MS Word document is password protected the password can be typed in this edit box.

**No graphics** This check mark tells the library to produce no images at all.